

Hike: Raintree — trail
Trailhead: on State Route 158 — marked
Distance: 6 miles — up and back
Elevation gain: 1,100 feet
Highest elevation: 10,200 feet
Time: 3 to 4 hours — up and back
Difficulty: 2
Danger level: 1
Class: 1
How easy to follow: 1
Children: yes
Waypoints (WGS84): See Page 2
Fee: None
Best season: Summer

Driving directions: From the Mirage on Las Vegas Boulevard (the Strip) go north 1.5 miles and turn left (west) onto Sahara.

In less than one mile, turn right (north) onto I-15.

Take I-15 two miles to US 95 north.

Take US 95 north 14 miles to State Route 157.

Turn left on 157, drive 17 miles, and turn right onto State Route 158.

Travel five miles to the North Loop trailhead sign, which is located on the left (west) side of the road. (See

Photo 1 – [Waypoint 1](#))

Comments: This is an easy hike that travels to a 3,000 year old Bristlecone Pine, the oldest living thing in the region. The tree has been named *Raintree*. The North Loop Trail is the trail for many hikes and ultimately goes to Charleston Peak.



Photo 1

The hike: The trail starts off at an easy grade wandering past ponderosa pine, pinion pine, and mountain mahogany. From June through September, a number of colorful flowers grow alongside the trail. To the east on Angel Peak rests a large, white, ball-shape observatory. The trail has a few moderate switchbacks before reaching a plateau. At the plateau there's a good view out to the NE. Several bristlecone pines

are scattered throughout this area indicating you are above 9,000 feet.



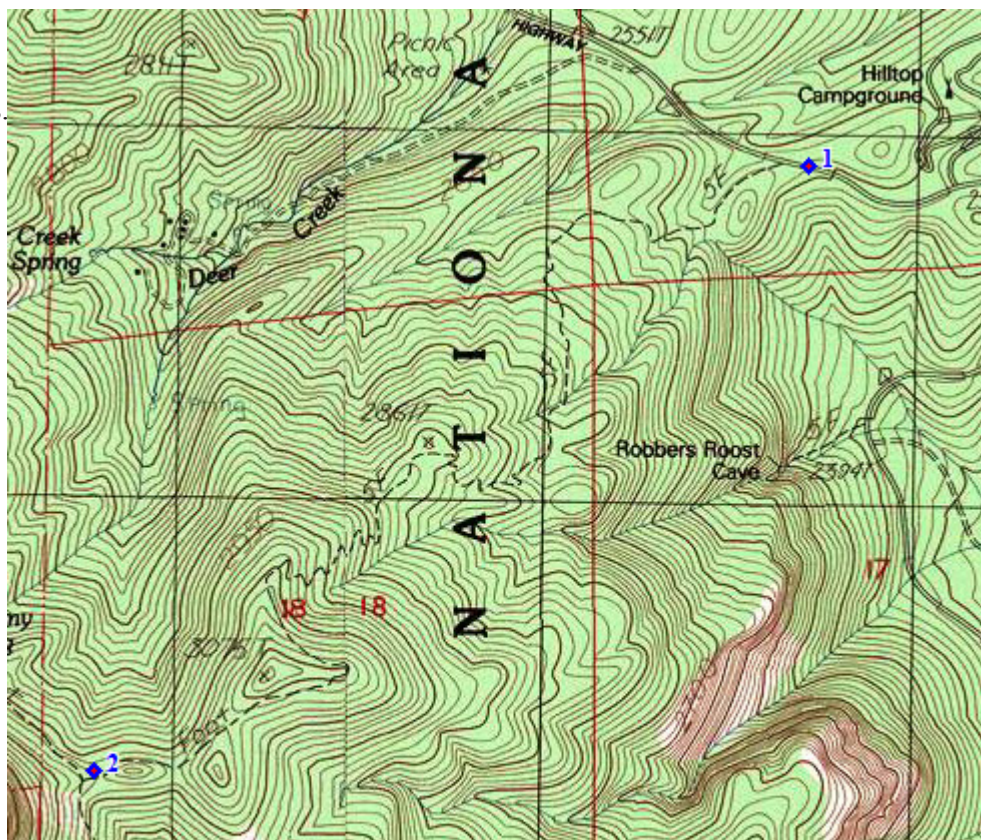
Photo 2

After 12 moderately steep switchbacks, the trail climbs to its highest elevation (10,200 feet). It then descends 150 feet over the next third of a mile before reaching Raintree, the giant bristlecone pine (**Photo 2 - Waypoint 2**). It's over 3,000 years old. Just think this tree was alive during the height of the Roman and Persia Empires! A wooden sign next to Raintree indicates options and the distances to other destinations, but does not mention Raintree.

You should not hike to Charleston Peak unless you are prepared. The hike is another eight miles from this point. It takes an additional 7 to 10 hours (round trip), and the temperature

rarely exceeds 60 degrees at the peak.

To Descend: Retrace your steps.



Name	Latitude	Longitude	Elevation	Message
◆ 1	36.30898° N	115.61182° W	8404 ft.	Trailhead
◆ 2	36.29422° N	115.63343° W	9889 ft.	Raintree