

Hike: Pine Creek — Trail and route

Trailhead: Pine Creek — marked

Distance: 4 miles — up and back

Elevation gain: less than 200 feet

Highest elevation: 4,350 feet

Time: 2 to 3 hours – up and back

Difficulty: 1

Danger level: 1

Class: 2

How easy to follow: 2

Children: Yes

Waypoints (WGS84): See Page 3

Fees: \$7 per car; \$30 for a yearly pass. All National Park Passes accepted.

Best Season: Spring and autumn

Driving directions: From the Mirage on Las Vegas Boulevard (the Strip) go north three miles and turn left (west) onto Charleston Boulevard.

Drive 16 miles on Charleston to Red Rock Canyon.

The signed parking area for Pine Creek Canyon is 10.3 miles past the Fee Booth.

Comments: This is a great beginner’s hike with great scenery, history, and a year round pool. Although you can end the hike at any point, the pool is very scenic and refreshing.

This hike travels through the south fork of Pine Creek as seen in **Photo 1**.

The Hike: Pine Creek Trail descends in a southerly direction and soon turns west toward the mouth of the canyon. Mescalito, a small, but majestic pyramid-shaped mountain, splits the canyon into north and south forks. This route heads into the south (left) fork. When the trail passes the cement foundation of the old Wilson homestead, you have hiked 0.8 of a mile. The trail divides a little past the foundation. Head right

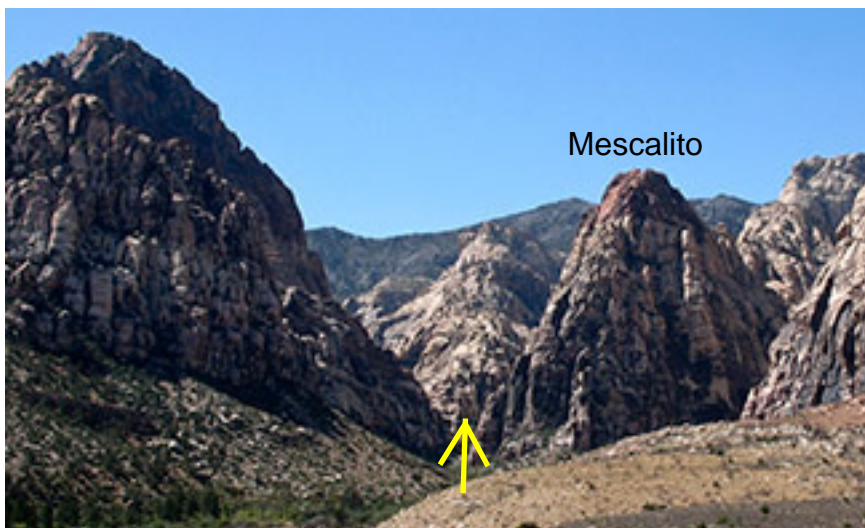


Photo 1

when the path forks. The juniper tree in **Photo 2** is your landmark. (**Waypoint 2**) The trail descends in about 30 yards and then divides; again take the unsigned right fork. The trail again divides in about 40 yards. Go straight following a path through the brush and descend into the wash.

Hike about 50 yards in the



Photo 2

The pool marks the end of the hike, as continuing up the canyon involves some class 3 scrambling. Keep an eye out for bighorn sheep. They come down to the wash for water. These amazing animals are the acrobats of the canyons. They seemingly run up vertical walls with ease.

To Descend: Retrace your steps.

wash and exit the wash as seen in **Photo 3** -**Waypoint 3**. The path climbs steeply for about 50 feet before leveling off. Follow the most prominent path (too many side paths to describe) as it heads SW and ends at the main wash (**Waypoint 4**). You are now in the south fork of Pine Creek Canyon.

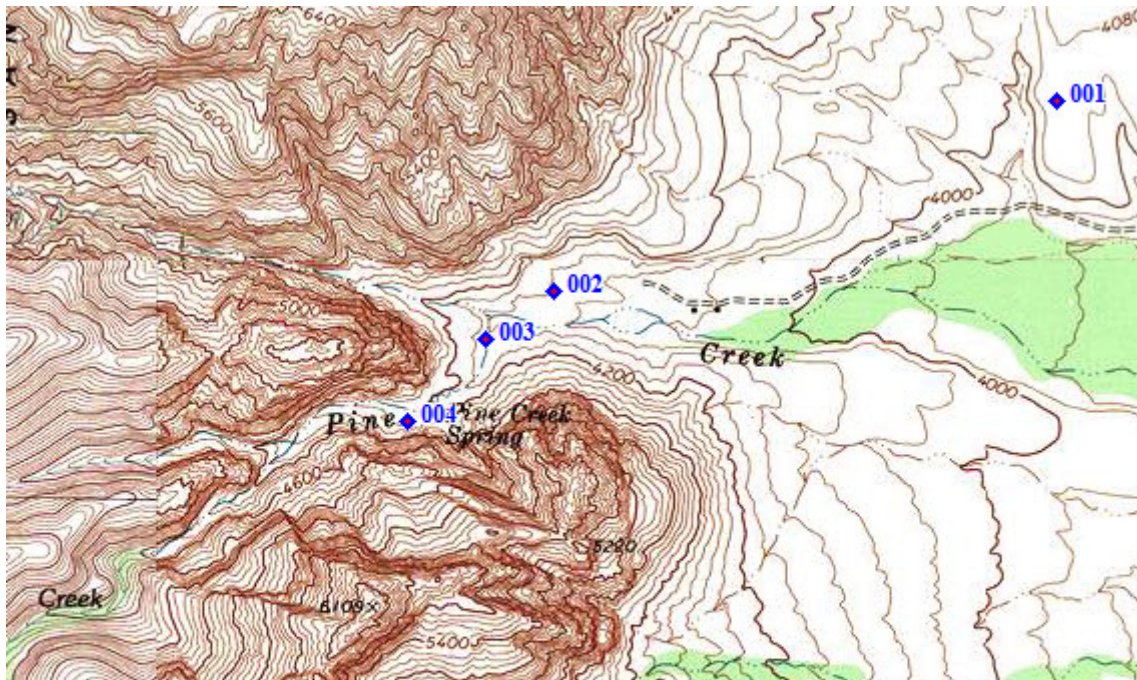
The wash heads SW and is mostly a class 1 route. Numerous paths have been created to avoid walking in water; however, most months the wash has little water. After several hundred yards you'll come to a pool that is the perfect place to sit and admire the beauty of Pine Creek. (See **Photo 4**.)



Photo 3



Photo 4



Name	Latitude	Longitude	Elevation	Message
◆ 001	36.12886° N	115.47372° W	4066 ft.	Trailhead
◆ 002	36.12421° N	115.48887° W	4109 ft.	Juniper tree
◆ 003	36.12305° N	115.49090° W	4120 ft.	Steep path out of wash
◆ 004	36.12107° N	115.49326° W	4200 ft.	Main wash