

**Hike:** Kraft Mountain Loop – Closed loop  
**Trailhead:** End of Sandstone Drive - unmarked  
**Distance:** 3.5 miles  
**Elevation gain:** 800 feet  
**Elevation peak:** None  
**Time:** 2 – 3 hours  
**Difficulty:** 2  
**Danger level:** 2  
**Class:** 2  
**How easy to follow:** 2  
**Children:** Yes, if hiked before  
**Map:** LaMadre Mountain, NV See Page 4  
**Fees:** None  
**Waypoints (WGS 84 GPS):** See Page 4

**Directions:** From the intersection of Charleston and 215 drive west on Charleston 3.9 miles and turn right onto Calico Basin Road. Drive 1.1 miles and turn right onto Calico Road. Drive 0.1 mile and turn left onto Assisi Canyon. Drive 0.1 mile, turn right onto Sandstone and drive 0.6 mile and park. [Waypoint 7](#). (The road ends here.) All roads are paved.

**Overview:** The route heads NW to a saddle. It then drops down into Gateway Canyon and heads SE through a wash. It completes the loop by heading SW back to the trailhead.

**Comments:** This is another fun loop hike. There's no fee, great scenery, and a lot of solitude. This hike description includes a class 1/2 workaround of a tricky class 3/4 downclimb. Photo 1 is Kraft Mountain.

**The Hike:** From where you parked head north on a path that parallels fences on both sides. The path descends



**Photo 1**

steeply into a wash and then back up the other side. Continue about 100 yards to a junction with an abandon road. Veer west (left) onto the abandon road and take a right fork when it divides (less than 100 yards from the start of the abandon road). Continue on the path as it weaves around boulders. When the path drops into a small wash and splits, take the



**Photo 2**

left fork. ([Waypoint 1.](#)) Follow this fork about 0.5 miles to the saddle in Photo 2. ([Waypoint 2.](#)) This is the only moderately steep part of the hike. From the saddle continue on the path 350 yards and turn right ([Waypoint 3.](#)) onto a path that leads down to the wash. When the path goes across sandstone, cairns guide you down the easiest route. (See Photo 3.) The path resumes at the far end of the sandstone. Continue

down the path where it ends in a drop-off above the wash. To avoid a class 3 downclimb into the wash, head west (left) 75 yards on a faint path to a class 2 downclimb into the wash. This is a little before dense scrub oak.



**Photo 3**

[Waypoint 4](#) marks the downclimb. **If the downclimb proves too difficult, you can stay on the main path until it drops into the wash. Head SE (right) in the wash. This adds about 0.25 miles to the hike.**

Head SE (right) through the wash. This is locally known as Gateway Canyon. The gray mountain behind you is Turtlehead Peak. The entire wash is very scenic. You'll encounter a few downclimbs, all class 2 or easier. When you come to the boulder in Photo 4, follow a faint path up the right bank. (We placed a large cairn on the boulder.) This avoids a tricky class 3/4 downclimb. Follow the path about 100 yards across the shelf to an obvious descent slope back into the wash. ([Waypoint 5.](#))

Continue in the wash a little less than a half mile to a prominent path coming in from the right side.

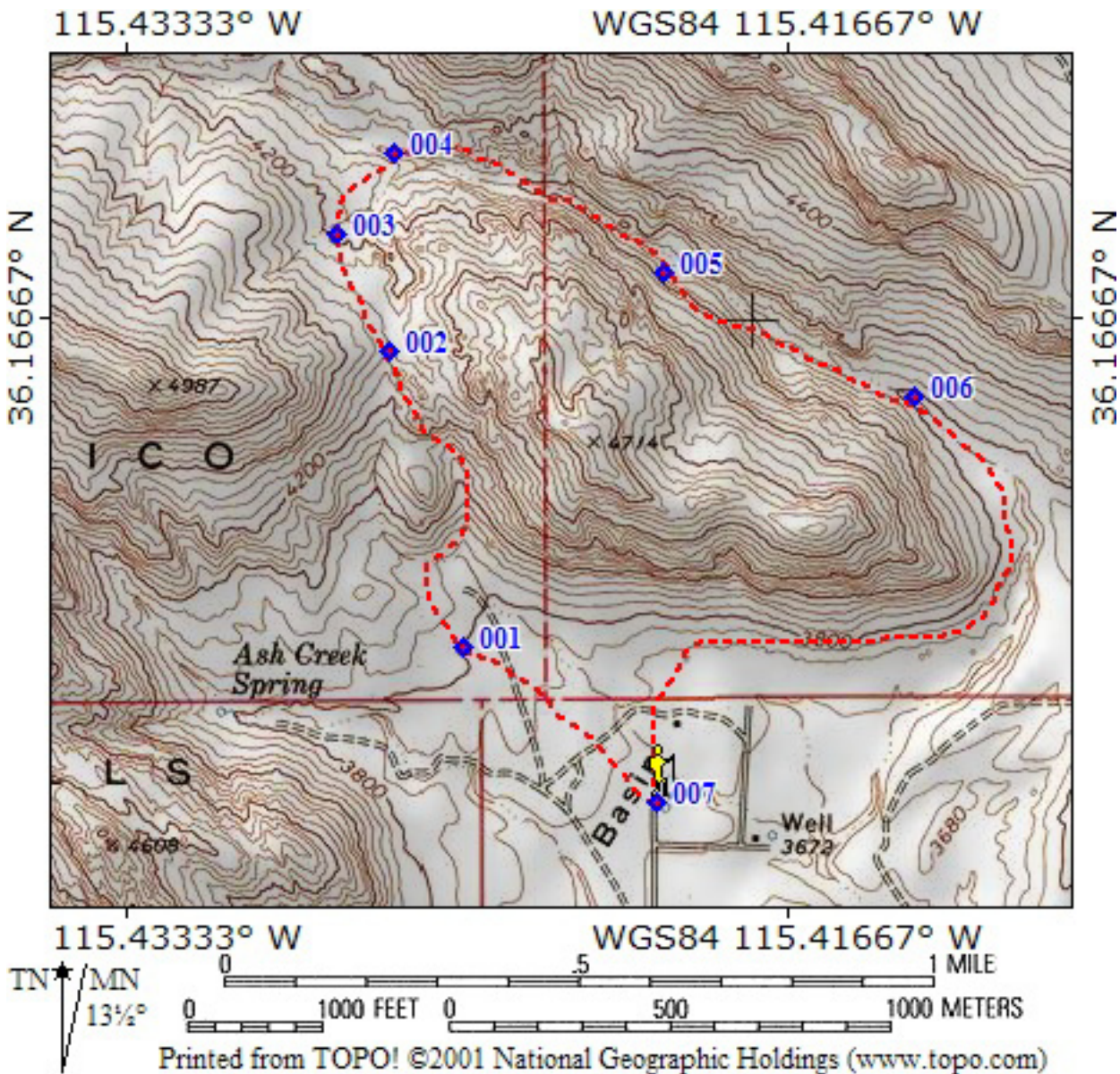


**Photo 4**

is on the far side of the home.

(Waypoint 7.)

(Waypoint 6.) Follow the path SE as it starts around the southern end of Kraft Mountain. When you come to a fork, take the prominent right path and continue around the mountain. You'll soon see homes in Calico Basin. Near the homes, numerous paths develop. Take any path that heads under the power lines. Head for the home with two silver silos on the roof. Your car



## Waypoints:

◆ 001	36.15999° N	115.42487° W
◆ 002	36.16600° N	115.42674° W
◆ 003	36.16841° N	115.42805° W
◆ 004	36.17009° N	115.42660° W
◆ 005	36.16762° N	115.41981° W
◆ 006	36.16508° N	115.41350° W
◆ 007	36.15679° N	115.42001° W