

**Hike:** Fletcher Canyon — trail and route  
**Trailhead:** North side of 157 — marked.  
**Distance:** 2 miles or 4 miles - up and back  
**Elevation gain:** < 200 feet – up to 600 feet  
**Elevation of Peak:** none  
**Time:** 1 hour, 2 hours - up and back  
**Difficulty:** 1 - 2  
**Danger level:** 1 - 1  
**Class:** 1-2  
**How easy to follow:** 1 - 1  
**Children:** Yes - yes  
**Waypoints (WGS-84):** See Page 3  
**Fees:** None  
**Best season:** Summer

**Driving directions:** From the Mirage on Las Vegas Boulevard (the Strip) go north 1.5 miles and turn left (west) onto Sahara. In less than one mile, turn right (north) onto I-15. Take I-15 two miles to US 95. Take US 95 north 14 miles to State route 157. Go left on 157, drive 18.2 miles up 157. Parking is along the south side of 157 at pullouts located within 100 yards of the trailhead. **Photo 1** is the trailhead.

**Comments:** The trail can be hiked as an easy 2-mile up and back or 4-mile up and back. It's worth doing the 4 mile hike. The canyon walls close in and during spring there's lots of water. The 4 mile up and back hike ends at a unique seasonal waterfall.



**Photo 1**

**The Hike:** The well maintained trail heads north and offers a good view of rocky cliffs that lie in the distance. It soon crosses a rocky wash and continues on the far side. The first mile of the trail have a slight grade, making it suitable for a person of any fitness level. A large tree lies across a creekbed at the end of the one-mile maintained trail.

Children can test their balancing skills by trying to walk across the tree. Although this marks the end



**Photo 2**

of the one-mile maintained trail, the rest of the trail is easy to follow.

As the trail heads NW, cliffs on both sides begin to close in. Water normally flows year-round in the creekbed. The trail crosses the creekbed a few times and splits, then rejoins a few hundred feet ahead. The canyon walls become tighter as the trail goes deeper into Fletcher Canyon. The trail winds around the wash and between the canyon walls. It turns south, empties into the creekbed, and weaves between 100-foot tall canyon walls. When the creekbed turns sharply to the north, boulder hopping becomes the best way to navigate. (See **Photo 2.**)



**Photo 3**

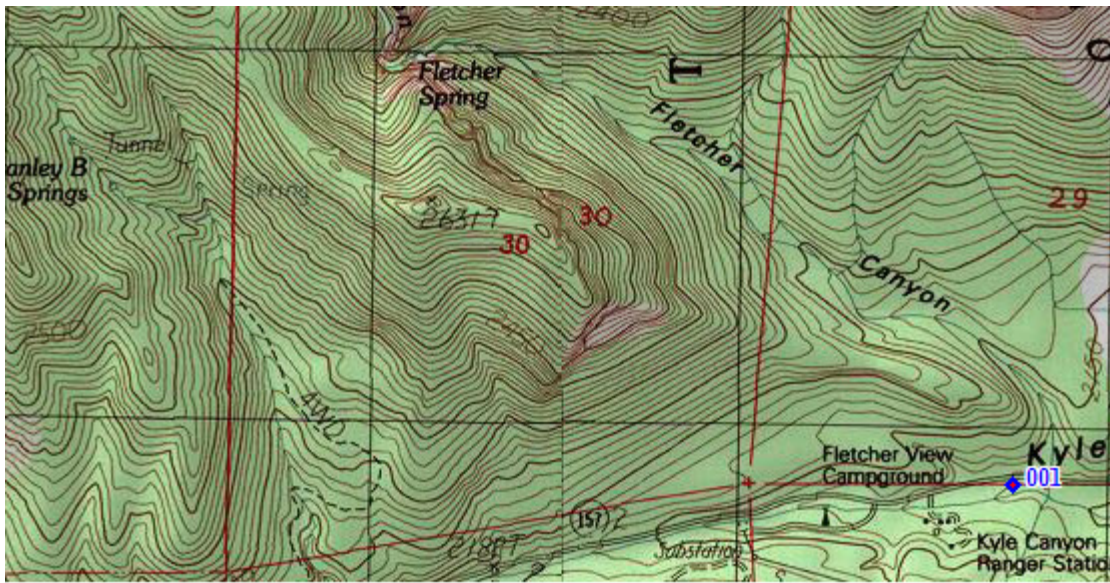
Water may be flowing in parts of the creekbed as you continue through the slot canyon. Up ahead the creekbed divides. The right fork dead ends in about 75 yards. Just before a huge boulder, aptly named Obstacle Rock that blocks the entrance to the left fork of the creekbed, is a stopping point for some hikers. There's a seasonal waterfall. See **Photo 3.**

A small opening at the bottom-left corner provides a way past Obstacle Rock. It's a tight squeeze, and short people might need help. From the trailhead to this point is about two miles. You could continue, but you have seen the best part of

the canyon already.

**To descend:** Retrace your steps.





Name	Latitude	Longitude	Elevation	Local Date & Time	Message
◆ 001	36.26328° N	115.61222°...	6958 ft.	05/22/10 06:56:52 AM	Trailhead Fletcher Canyon