

**Hike:** Big Falls – up and back  
**Trailhead:** Mary Jane Falls - marked  
**Distance:** 3.50 miles – up and back  
**Elevation gain:** 800 feet  
**Elevation highest point:** 8,700 feet  
**Time:** 2 hours – up and back, plus time spent at Big Falls  
**Difficulty:** 2  
**Danger level:** 2  
**Class:** 2  
**How easy to follow:** 2  
**Children:** Yes  
**Waypoints** (WGS84): See Page 3  
**Fees:** None  
**Best season:** Late spring and summer

**Driving directions:** From the Mirage on Las Vegas Boulevard (the Strip) go north 1.5 miles and turn west (left) onto Sahara. In less than one mile, turn north (right) onto I-15. Take I-15 two miles to US 95 north. Take US 95 north 14 miles to State Route 157. Go west (left) onto 157 and drive 20.6 miles veering onto Echo Drive at the hairpin curve. Drive 0.4 of a mile and turn left at the sign for Mary Jane Falls. Drive 0.2 of a mile on the gravel road to the parking lot. The trailhead is located at the far side of the parking lot. ([Waypoint 1](#)) A passenger car can drive to the trailhead.

**Comments:** Big Falls is the most spectacular waterfall in the Spring Mountains. It drops over 100 feet crashing into the rocks below. The best time to see the waterfall is late spring as the snow melts. By late summer the



**Photo 1**

waterfall is just a trickle.

**The Hike:** The trail heads NW winding through ponderosa pines and aspens. The grade is easy and the cool mountain air is a welcome relieve from the heat of Las Vegas. In about 0.75 of a mile, as the **trail** veers to the right, continue straight onto the gravel path. See **Photo 1**.

([Waypoint 2](#))

Hike 75 yards up the path, passing an obvious path on the left, and continue as the path bends SW (left) at a large fallen tree.

See **Photo 2**. The grade is easy as the path heads toward the huge drainage. The path crosses a minor drainage ([Waypoint 3](#)) and resumes on the far side. See **Photo 3**. Follow the path another 100 yards down into the



**Photo 2**

drainage ([Waypoint 4](#)).

From this point, the hike is a route. Start boulder hopping up the drainage. Be careful — some of the boulders are very slippery. When you see a large boulder blocking the wash, follow an obvious path up the left bank. The path descends (it's loose here) back into the wash just beyond the boulder.

Continue a few hundred yards up the drainage to the waterfall. Depending on the amount of water in the drainage, you might want to follow a path up on the west (right) side of the drainage.

Big Falls ([Waypoint 5](#)) roars when the sun melts the winter snow resulting in a large amount of water at the base of the falls. When there's a breeze, it creates a refreshing mist. Normally the water is too cold to play in. (See **Photo 4**.)



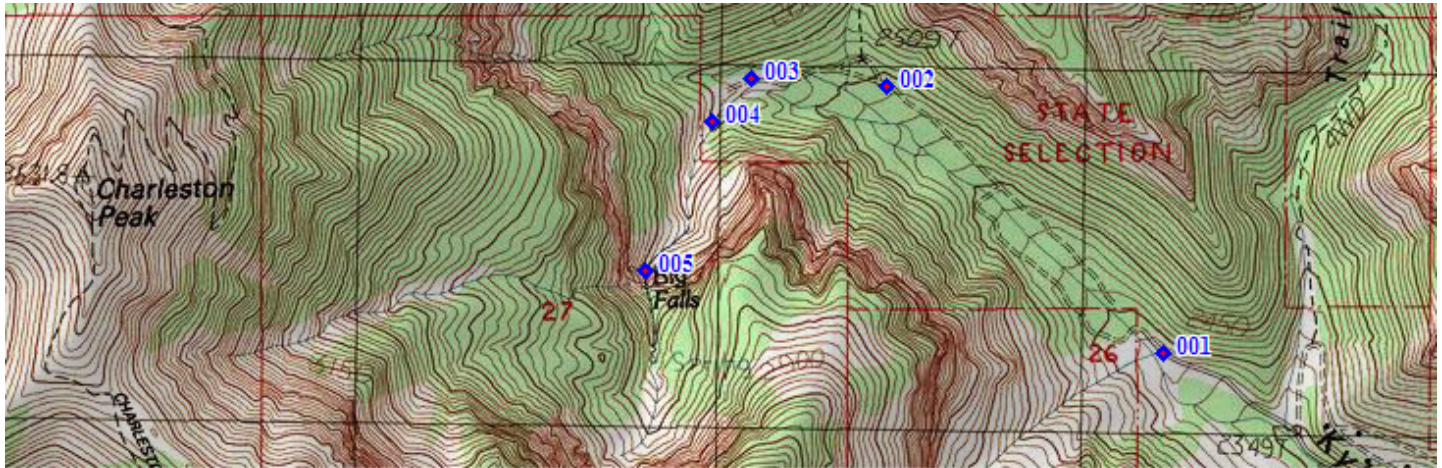
**Photo 3**



**Photo 4**



**To descend:** Retrace your steps. Look for the path that leads back to the trailhead. It will be on your left



Name	Latitude	Longitude	Elevation	Message
◆ 001	36.26718° N	115.66243° W	7834 ft.	06-JUN-10 9:50:25AM - Trailhead
◆ 002	36.27385° N	115.67092° W	8158 ft.	06-JUN-10 10:06:19AM - continue straight onto the gravel path
◆ 003	36.27403° N	115.67510° W	8273 ft.	06-JUN-10 10:16:25AM - path crosses a minor drainage
◆ 004	36.27296° N	115.67630° W	8329 ft.	06-JUN-10 10:20:09AM - main drainage
◆ 005	36.26927° N	115.67831° W	8708 ft.	