

Hike: Lone Palm — route
Trailhead: Along Highway 93 — not marked
Distance: 6 miles — round trip
Elevation gain: 1,100 feet - mostly on the return
Highest Elevation: 1,300 feet
Time: 3 to 4 hours – up and back
Difficulty: 2
Danger level: 2
Class: 2+
How easy to follow: 2
Children: No
Waypoints (WGS 84): See Page
Fees: None
Best Season: Winter

Driving directions: From Las Vegas head south to the 215.

Go east on 215 and veer right (south) onto Highway 93/95 to Boulder City.

Make a left at the second stop light onto south 93 (Lake Mead - Hoover Dam sign).

Drive across Hoover Dam, continue one mile and exit at Exit 2 – Kingman Wash Access Road (do NOT take the Hoover Dam exit).

At the end of the off ramp make a hard right and drive 200 yards to the parking lot. **Photo 1** - [Waypoint 1](#).)

Comments: This remote hike avoids the crowds of other popular hikes that travel to the Colorado River.

There's a scenic waterfall at the river along with the Lone Palm (Actually there's more than one palm. We saw two herds of bighorn sheep along the route! The trickiest part of this hike is finding the correct wash that leads to the Lone Palm.

The Hike: Follow the obvious, but unsigned trail that **descends** south (left) into the wash, which is visible from the parking lot. Once in the wash hike about 25 yards to the intersection of the smaller wash in **Photo**



Photo 1

2. To avoid the brush and loose rock enter along the right side of this wash. In 40 yards you come to a dry fall. Just before the dry fall scramble up the wall as seen in **Photo 3**. At the top of the wall follow a path that heads south and eventually follows a shallow wash ([Waypoint 2](#)). Continue south in the wash. At times you can see the highway out to the east. You will be heading south toward the butte in

Photo 4. In about a mile from the trailhead the path



Photo 2

becomes very prominent and heads down into the main wash that leads to the Colorado River (**Photo 5** - [Waypoint 3](#)). Once in the wash you will come to a dry fall in about 100 yards. Although you can't see it, the bottom of the fall is overhung. Go around to the left on a faint path to get around it.

In about 75 yards you come to another dry fall. This time follow a path to the right to bypass the dry fall. Continue in the wash

several hundred yards to another dry fall. Look for a faint path to the left to bypass the dry fall. The path



Photo 3

follows the ridge for about 100 yards bypassing another dry fall. As you follow the path on the ridge, look south to see Liberty Bell Arch. Descend into the wash and continue several hundred yards in the wash. At [Waypoint 4](#) you can see the Hoover Dam Bridge. In about a third of a mile you encounter class 2 scrambling and soon the ramp in **Photo 6**. Scramble up the ramp and follow a well-worn path about 100

yards to the Colorado River. Just before the path drops you to the Colorado River there's a short downclimb. Weaker hikers might want a rope/webbing for the up climb when heading back to the trailhead. There's a good tree about 10 feet before the downclimb. 20 feet of rope or webbing is sufficient.

Once at the river walk about 30 yards north (right) to a hidden waterfall. This is a



Photo 4



Photo 5

great place to sit, relax, and enjoy the beauty and solitude of the Colorado River.

To return: Retrace your steps back on the path and through the wash. When you pass the wall and boulder (it rocks a bit) in **Photo 7**, leave the wash as seen in **Photo 8**. Ascending up the rock is better footing than

following the path. Once the terrain levels follow the path and wash back to the trailhead.



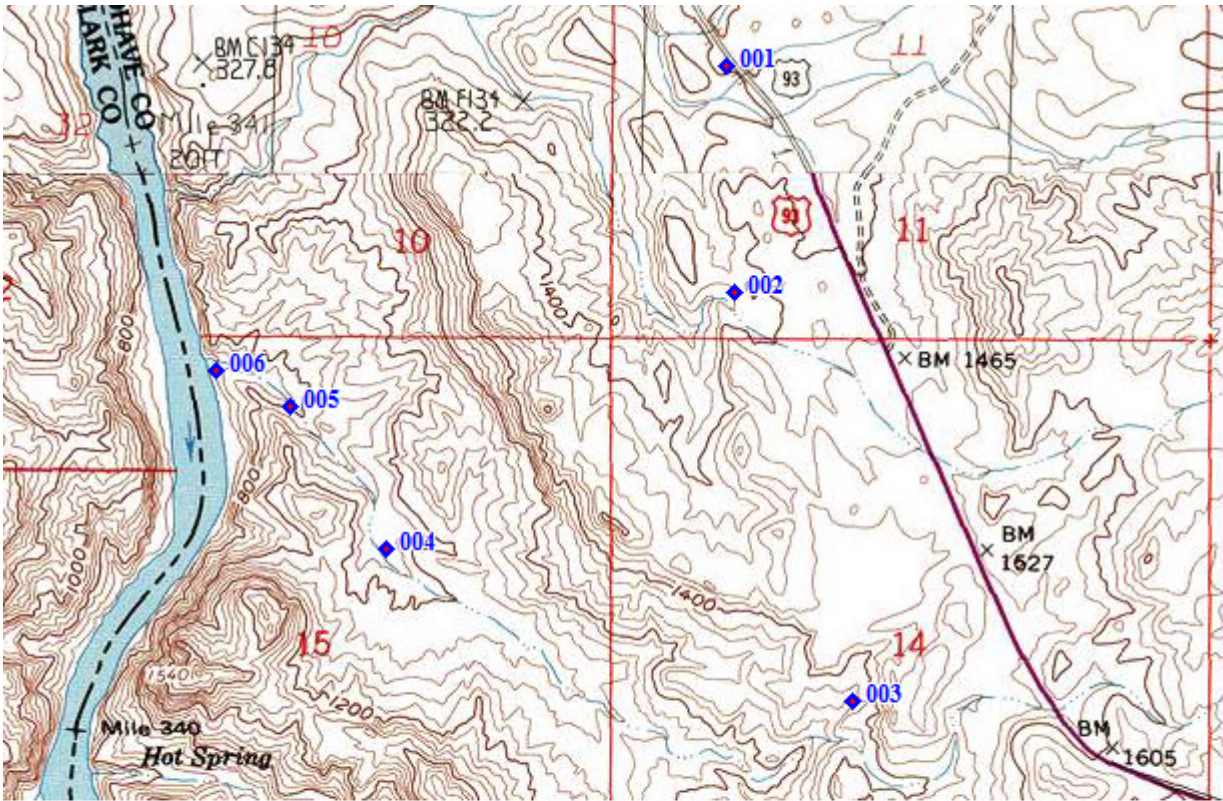
Photo 6



Photo 7



Photo 8



Name	Latitude	Longitude	Elevation	Message
◆ 001	36.00256° N	114.72393° W	1302 ft.	Parking lot - Trailhead
◆ 002	35.99707° N	114.72370° W	1347 ft.	Shallow wash
◆ 003	35.98711° N	114.72017° W	1300 ft.	Main wash
◆ 004	35.99078° N	114.73420° W	927 ft.	View of the bridge from the wash
◆ 005	35.99426° N	114.73706° W	792 ft.	Ramp in Photo 6
◆ 006	35.99517° N	114.73927° W	654 ft.	Colorado River