

Hike: Liberty Bell Arch — trail
Trailhead: White Rock Canyon —marked
Distance: 6 miles — round trip
Elevation gain: 800 feet
Highest elevation: none
Time: 3 to 4 hours – up and back
Difficulty: 2
Danger level: 2
Class: 2
How easy to follow: 3
Children: Yes
Waypoints (WGS 84): See Page 4
Fees: None
Best Season: Winter

Driving directions: From the intersection of Highway 93 and 95 in **Boulder City, NV**, drive east on **Highway 93** three miles through Boulder City and make a left at the second stop light onto south 93 (Sign reads: Lake Mead – Hoover Dam).

Drive 7 miles to the new bridge at Hoover Dam. Do NOT take the Hoover Dam exit.

From the “Welcome to Arizona” sign at the far end of the bridge drive 3.1 miles and turn **left** at the signed White Rock Canyon Trailhead Access.

Cross the highway and follow the paved road 0.1 of a mile to the huge parking lot.

Comments: This is a must do hike. Thousands of years of wind have formed an arch through conglomerate



Photo 1

rock. If that wasn't enough, the lunch spot overlooks the Colorado River. The rugged terrain and the solitude of this hike will appeal to anyone who likes the outdoors. This description was done after the highway construction and is accurate. The older hike descriptions are not valid, since the old trailhead was demolish during highway construction.

The Hike: From the parking lot follow a hiker's path under the highway. See **Photo 1**. Once past the highway you will see the sign in **Photo 2** – [Waypoint 1](#). Walk about 100 yards west down the wash. There's no real path, but the direction of travel is obvious. Leave the wash and hike NW (right) cross country ([Waypoint 2](#)) toward an abandon gravel road as seen in **Photo 3**. Once on the road ([Waypoint 3](#)) follow it



Photo 2

about a half mile until you see the bridge in **Photo 4**. Start looking for a path (unsigned) that heads west. Numerous cairns mark this spot. This is the path that leads to Liberty Bell Arch ([Waypoint 4](#)).

The path soon curves SE and descends a slope. At the bottom of the slope the path passes between a couple of large boulders

before it makes a “U” turn and heads SW up another slope.

The path turns west and travels up another slope to the top of an old mine. A wooden sled-like piece of mining equipment rests near the mine. Follow the path down the backside of the slope where it soon



Photo 3

makes a hard right before it forks. To go to the mine, take the right fork. The mine, about 50-feet long, was active back in the forties. See **Photo 5-Waypoint 5**.

From the mine retrace your steps to a wash that heads south

toward Liberty Bell Arch. You’ll eventually pass greenish rocks that lie in the wash. About 80 yards beyond the greenish rocks, **the path** resumes along the right bank and travels NW up a gentle slope. Near the top of the slope, the arch comes into view (See **Photo 6**.)

At the top of the slope, the path intersects another path. Go left (SE) onto the path as it heads toward the Arch. When you come to a high point, you’re less than 200 yards from the Arch. The path swings to the left and continues SE as it climbs a slope. The path disappears when it goes over rocks. Look for cairns if you lose the path. Once the terrain flattens the path is easy to follow. Continue on the path as it heads south



Photo 4

to an awesome overlook of the Colorado River and White Rock Canyon. This is a perfect place for lunch if there's no wind.

([Waypoint 6.](#))

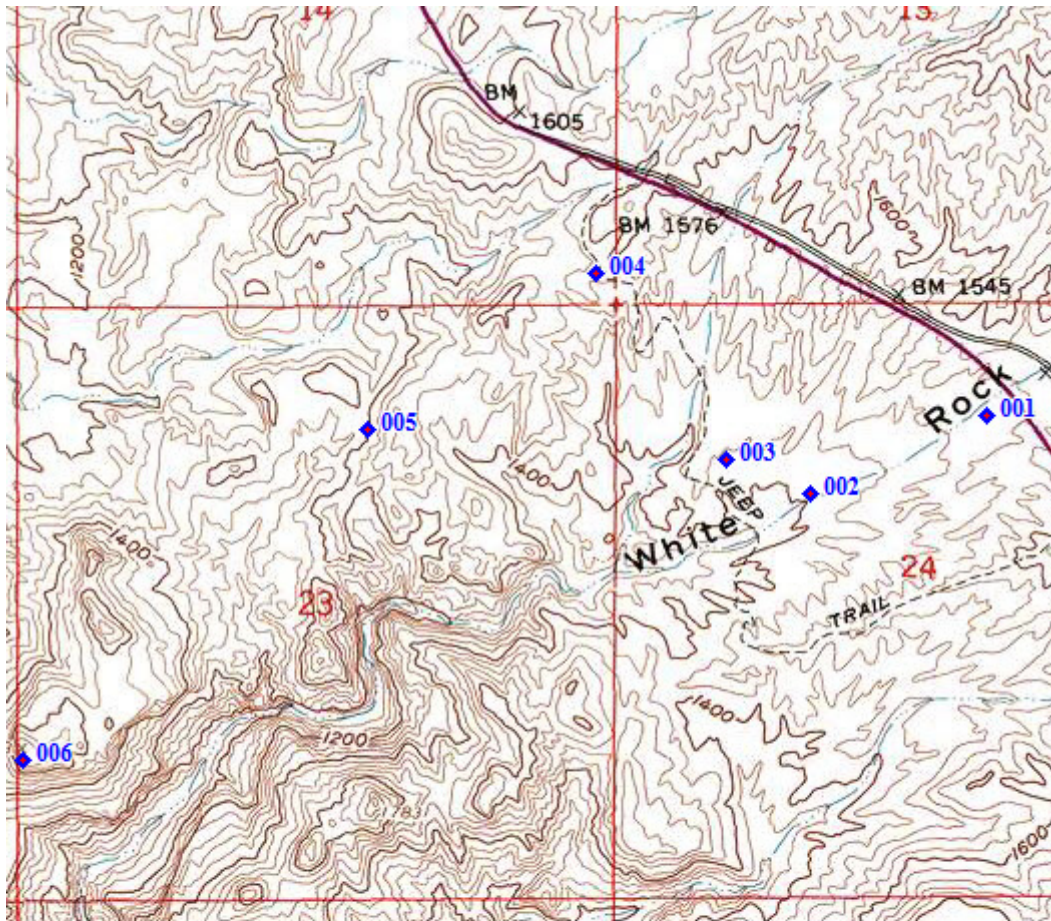
To descend: Retrace your steps.



Photo 5



Photo 6



Name	Latitude	Longitude	Elevation	Message
• 001	35.97852° N	114.69832° W	1464 ft.	Trailhead
• 002	35.97661° N	114.70361° W	1374 ft.	Leave wash
• 003	35.97747° N	114.70610° W	1397 ft.	Abandon gravel road
• 004	35.98198° N	114.71005° W	1547 ft.	Trail
• 005	35.97819° N	114.71693° W	1403 ft.	Mine
• 006	35.97015° N	114.72724° W	1669 ft.	Overlook